



WETSUITS

[SEMI-DRY TOP](#)

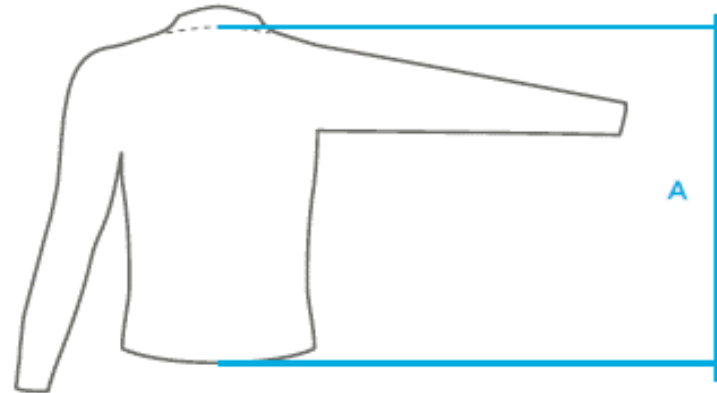
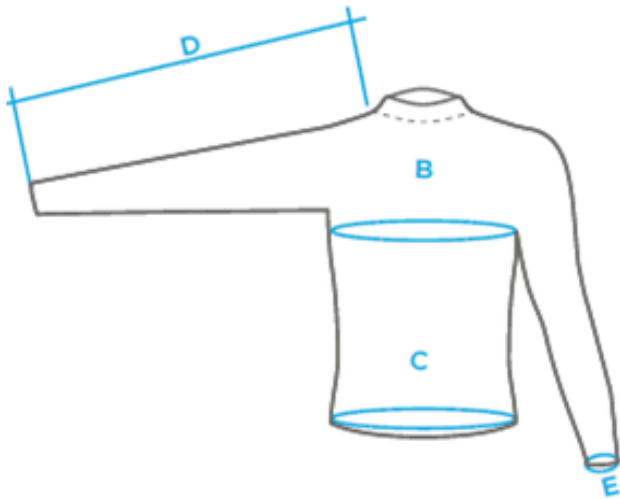
	MEASUREMENT POINT		XS	S	M	L	XL
A	TOP LENGTH		37,27	37,67	38,07	38,47	38,87
B	CHEST		117,65	121,65	125,65	129,65	133,65
C	SLEEVE LENGTH		78,67	80,97	83,27	85,27	86,77
D	CUFF OPENING		12,39	12,59	12,79	12,99	13,19
E	% CUFF OPENING		18,59	18,89	19,19	19,49	19,79
F	COLLAR OPENING		30,4	31,4	32,4	33,4	34,4

[SEMI-DRY PANT](#)

	MEASUREMENT POINT		XS	S	M	L	XL
A	TOTAL LENGTH		96,7	99,7	102,7	105,7	108,7
B	WAIST		73,7	78,7	83,7	88,7	93,7
C	HIP		81,2	85,2	89,2	93,2	97,2
D	BACK LENGTH		31	32	33	34	35
E	INSEAM		74,7	76,7	78,7	80,7	82,7
F	LEG OPENING		19	19,7	20,4	21,1	21,8
G	% LEG OPENING elongation 3kg + 50%		28,5	29,55	30,6	31,65	32,7

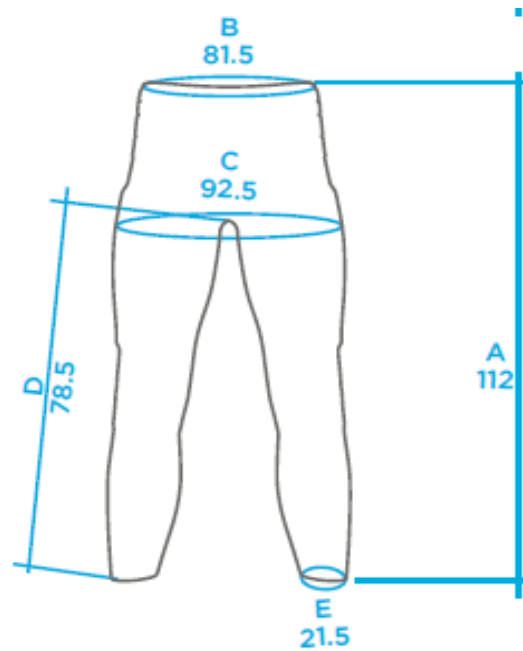
NEOPRENE TOP

	MEASUREMENT POINT	S	M	L	XL
A	TOP LENGTH	66	67,5	69	70,5
B	CHEST	88	92	96	100
C	HIP	83,5	87,5	91,5	95,5
D	SLEEVE LENGTH	71	72,5	74	75,5
E	CUFF OPENING	15	15,5	16	16,5



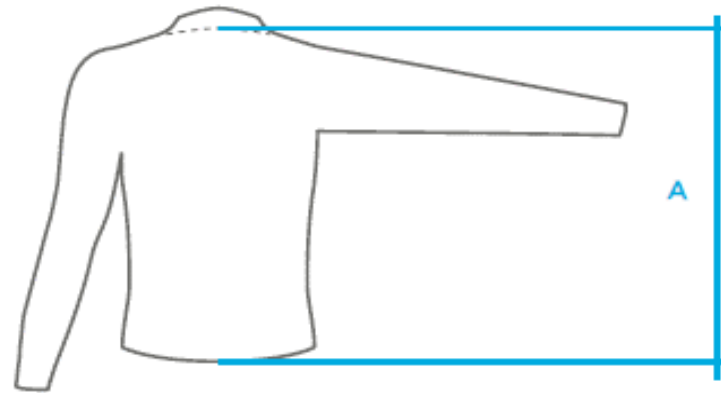
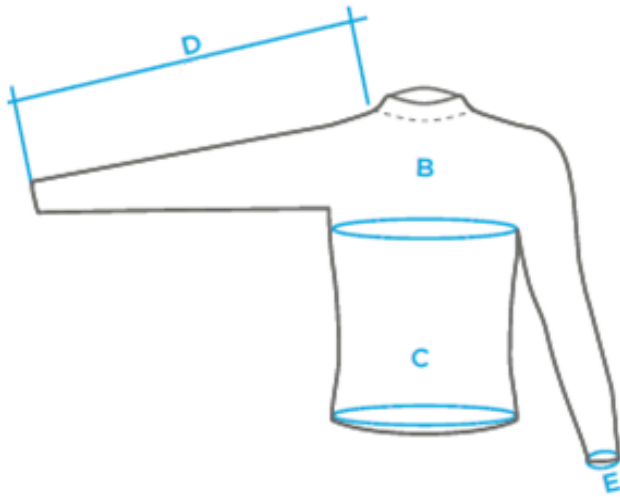
NEOPRENE PANT & 3/4 SHORT + PRO EC PANT

	MEASUREMENT POINT		XS	S	M	L	XL	
A	TOTAL LENGTH		104,5	107	109,5	112	114,5	
B	WAIST		69,5	73,5	77,5	81,5	85,5	
C	HIP		80,5	84,5	88,5	92,5	94,5	
D	INSEAM		73,5	75,5	77,5	78,5	80,5	
E	LEG OPENING		18,5	19,5	20,5	21,5	22,5	



TITANIUM TOP

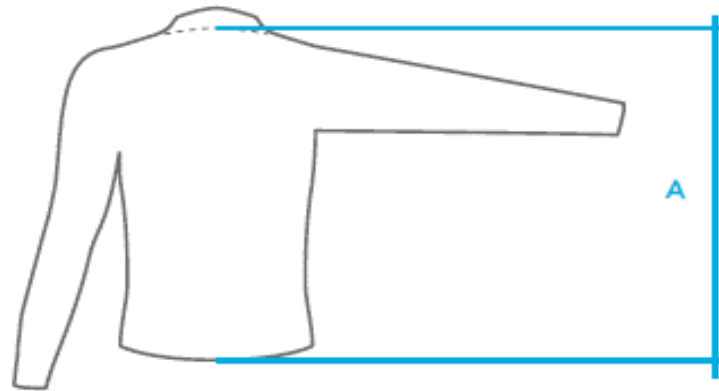
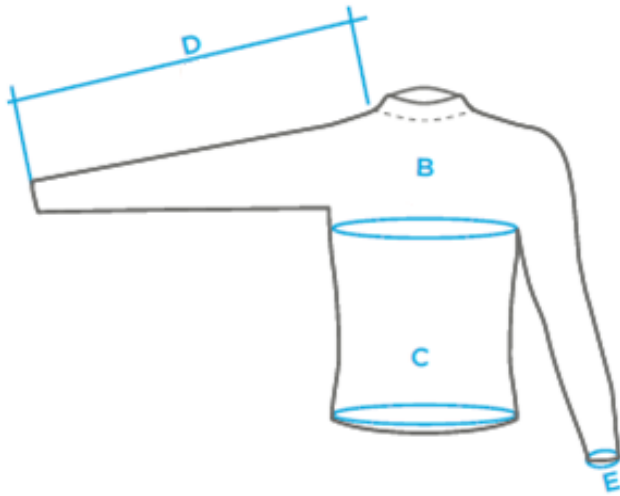
	MEASUREMENT POINT		XS	S	M	L	XL	
A	TOP LENGTH		62,6	64,1	65,6	67,1	68,6	
B	CHEST		84	88	92	96	100	
C	HIP		79,5	83,5	87,5	91,5	95,5	
D	SLEEVE LENGTH		69,5	71	72,5	74	75,5	
E	CUFF OPENING		15,1	15,1	15,6	16,1	16,6	



0

LYCRA TOP LONG SLEEVE + PRO TEC TOP

	MEASUREMENT POINT		XS	S	M	L	XL	
A	TOP LENGTH		63	64,5	66	67,5	69	
B	CHEST		83	87	91	95	99	
C	HIP		72	76	80	84	88	
D	SLEEVE LENGTH		64,5	66	67,5	69	70,5	
E	CUFF OPENING		17,5	17,5	18	18,5	19	



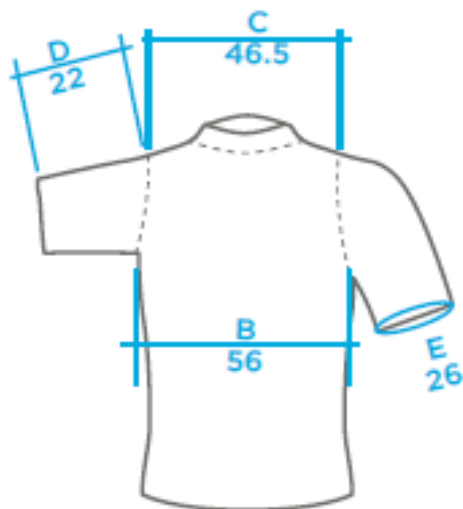
NEOPRENE SHOE

EURO	36 / 37	38 / 39	40 / 41	42 / 43	44 / 45	46 / 47
UK	4 / 4,5	5 / 5,5	6,5 / 7	8 / 9	9,5 / 10,5	11 / 12
USA	4 / 5	5,5 / 6,5	7 / 8	8,5 / 9,5	10 / 11	12 / 13

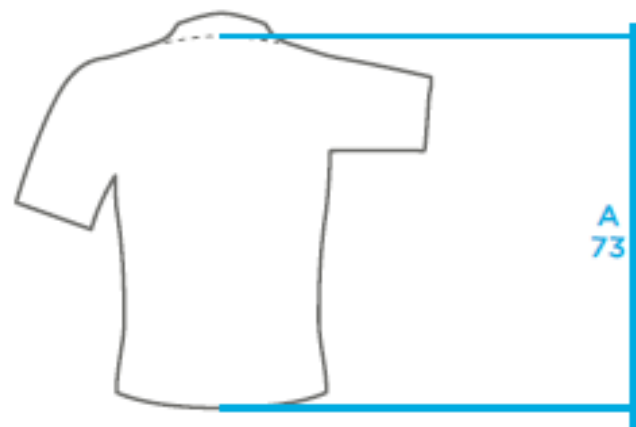
APPAREL

T-SHIRT SHORT SLEEVES

	MEASUREMENT POINT			S	M	L	XL	
A	TOP LENGTH			68	70,5	73	74,5	
B	CHEST			48	50,5	53	55,5	
C	SHOULDER			40	42	45	48	
D	SLEEVE LENGTH			19	20,5	22	23,5	
E	CUFF OPENING			25	25,5	26	26,5	



T-SHIRT SHORT SLEEVE
SIZE L

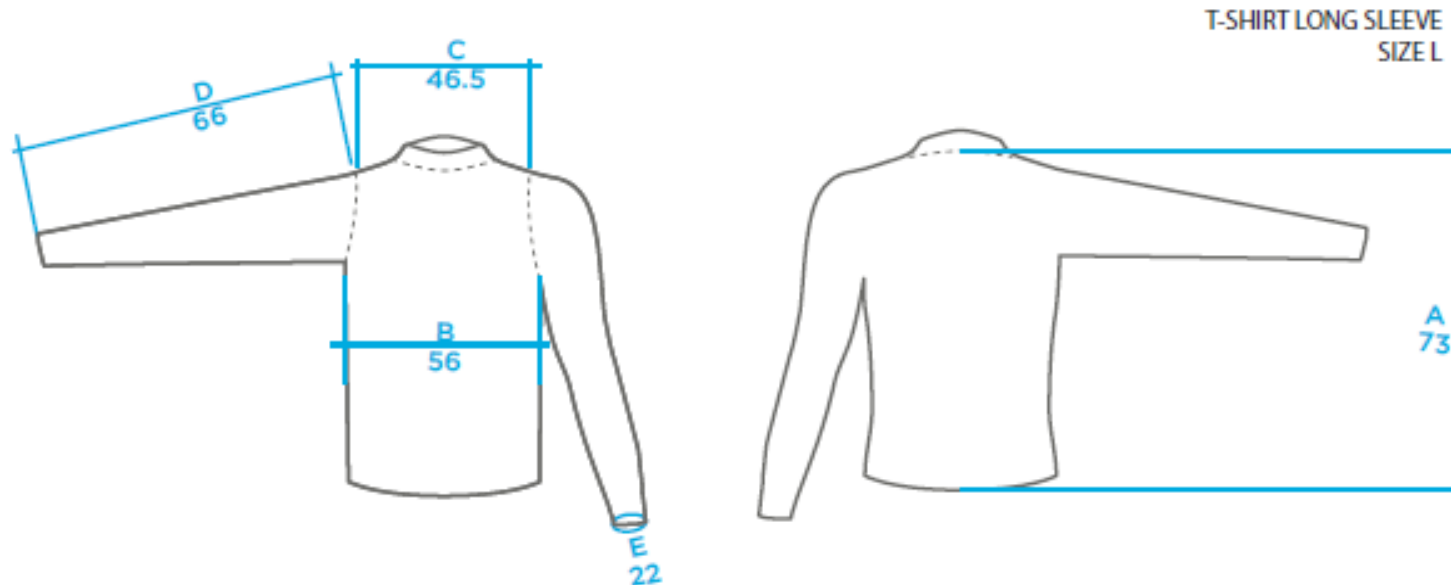


POLO

	MEASUREMENT POINT			S	M	L	XL	
A	TOP LENGTH			68	70,5	73	74,5	
B	CHEST LENGTH			48	50,5	53	55,5	
C	SHOULDER LENGTH			41,5	43,5	46,5	49,5	
D	SLEEVE LENGTH			19	20,5	22	23,5	
E	CUFF OPENING			25	25,5	26	26,5	

T-SHIRT LONG SLEEVE

	MEASUREMENT POINT			S	M	L	XL	
A	TOP LENGTH			68	70,5	73	74,5	
B	CHEST LENGTH			51	53,5	56	58,5	
C	SHOULDER LENGTH			41,5	43,5	46,5	49,5	
D	SLEEVE LENGTH			63	64,5	66	67,5	
E	CUFF OPENING			21	21,5	22	22,5	



SWEATSHIRT ZIP HOODED

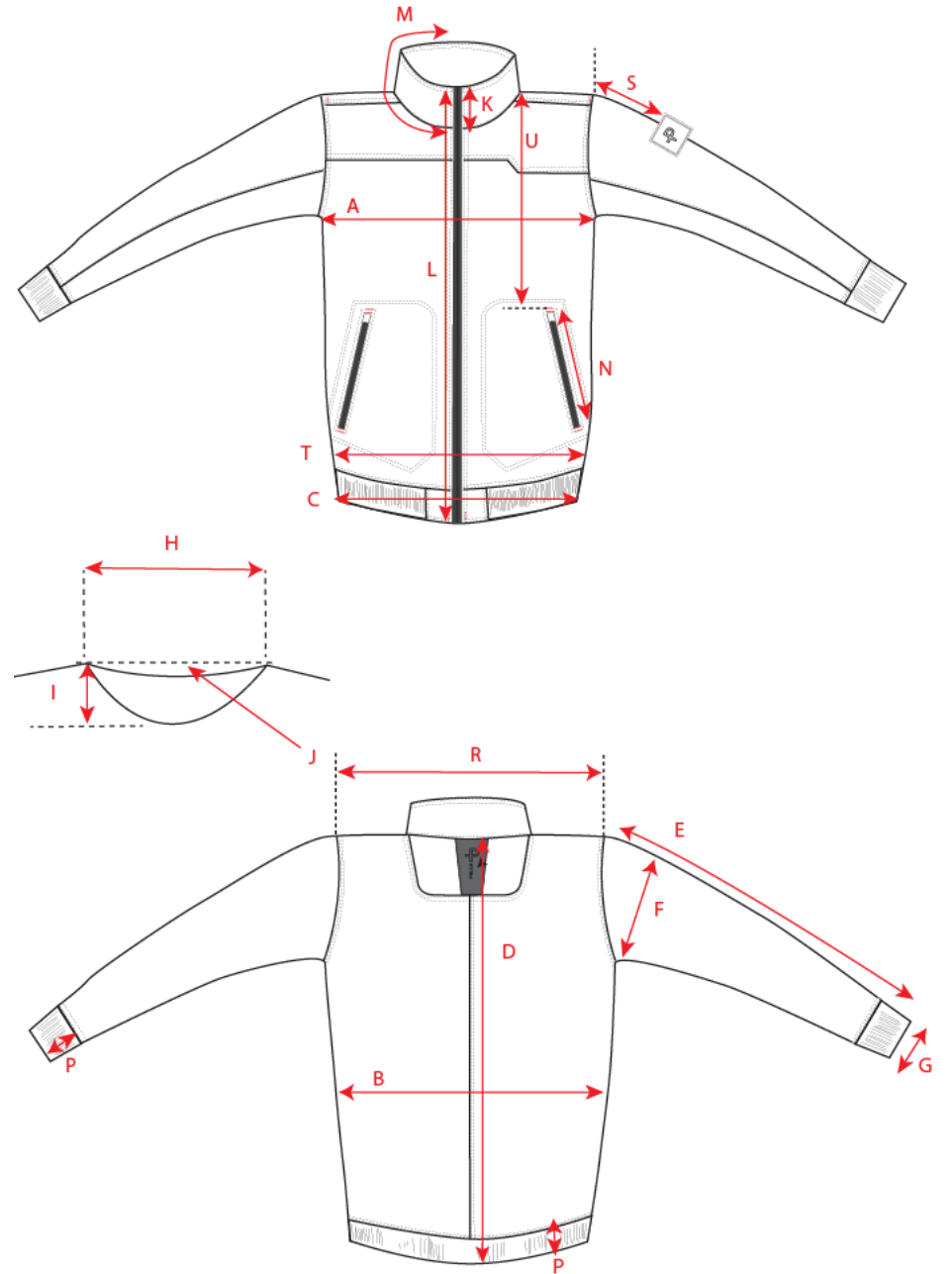
	MEASUREMENT POINT			S	M	L	XL	
A	TOP LENGTH			70	72,5	75	76,5	
B	CHEST LENGTH			54	56,5	59	61,5	
C	SHOULDER LENGTH			48	50	53	56	
D	SLEEVE LENGTH			67	68,5	70	71,5	
E	CUFF OPENING			21	21,5	22	22,5	
F	ZIP LENGTH			73	75,5	78	79,5	

DINGHY SMOCK

		XS	S	M	L	XL
A	½ Chest	50,5	53,5	56,5	59,5	62,5
B	½ Waist	48	51	54	57	60
C	½ Bottom 2cm above the rib	49	52	55	58	61
F	CB inkl. rib	78	80	82	84	86
G	Sleeve length from CB	87,25	89,5	91,75	94	96,25
H	½ Upper sleeve width	25	26	27	28	29
I	½ Bottom sleeve width	13,5	14	14,5	15	15,5

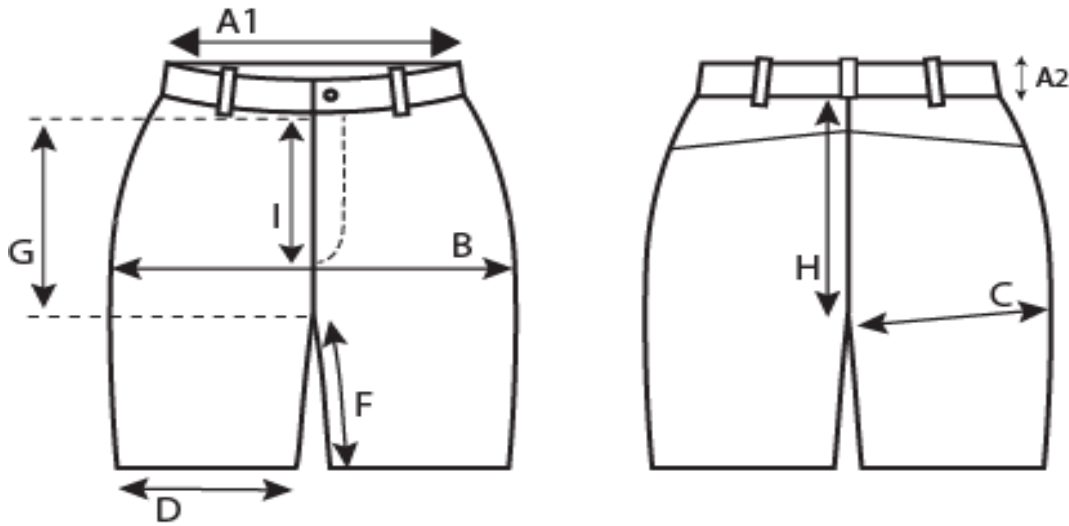
WINDBREAKER JACKET

		M	L(cm)	XL
A	1/2 Chest	59,5	62, 5	65, 5
B	1/2 Waist	54	57	60
C	1/2 Bottom	56	59	62
D	CB incl. Rib	72	74	76
E	Sleeve length fr shoulder + rib	68,5	70	71, 5
F	1/2 Upper sleevewidth	27	28	29
G	1/2 Bottom Sleevewidth	12	12, 5	13



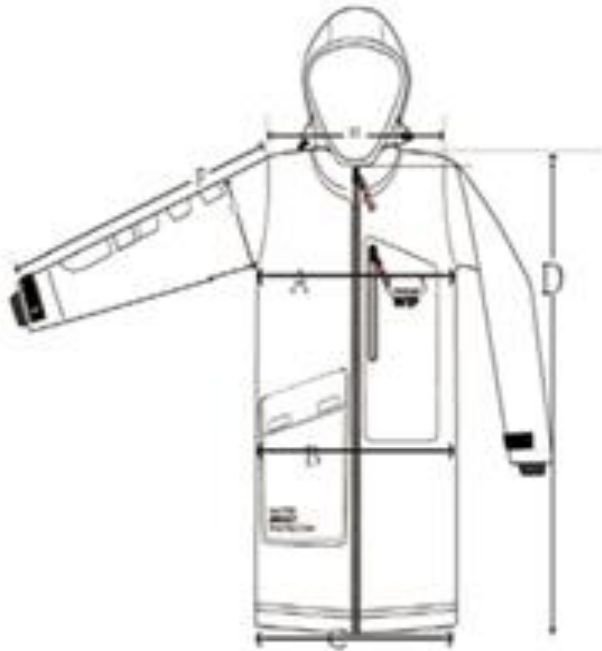
SAILING SHORT

		S	M	L(cm)	XL
A	½ Waist	42	45	48	51
B	½ Seat	52	55	58	61
C	½ Thigh	32,5	34	35,5	37
D	½ Bottom	26,75	27,75	28,75	29,75
F	Inseam	26	27	28	29
G	Front rise, below WB	23	24	25	26
H	Back rise, Below WB	38,5	39,5	40,5	41,5



RACE PARKA

	S	M	L	XL
A	54	56	58	62
B	53,5	55,5	57,5	61,5
C	52,5	54,5	56,5	60,5
D	75	80	85	89
F	58	60,2	61,5	64,1
H	45,5	47	48,5	51,5
I	71,5	76,5	81,5	85,5



NEOPRENE BEANIES :



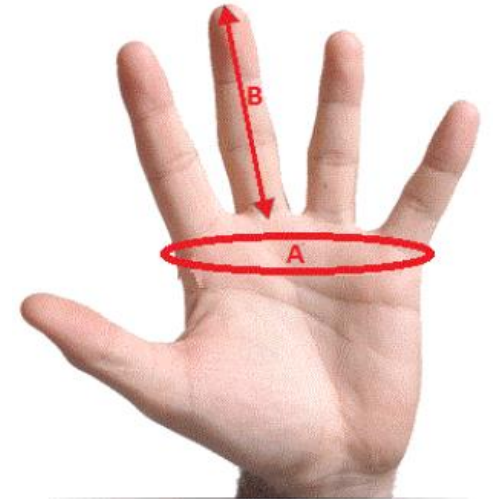
Depth = 17.5cm

Max. head circumference : 60cm

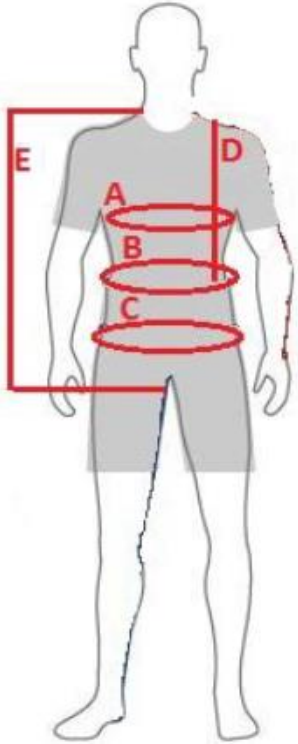
ORIGINAL & WIP GLOVES



Gloves	A	B
XS/S	13 to 16cm	6.2 to 7cm
S/M	16 to 19cm	7 to 7.9cm
M/L	19 to 22cm	7.9 to 8.8cm
L/XL	0	8.9 to 9.8cm
XL/XXL	26 to 29cm	9.8 to 10.5cm



TRAPEZE HARNESS LIGHT & PRO

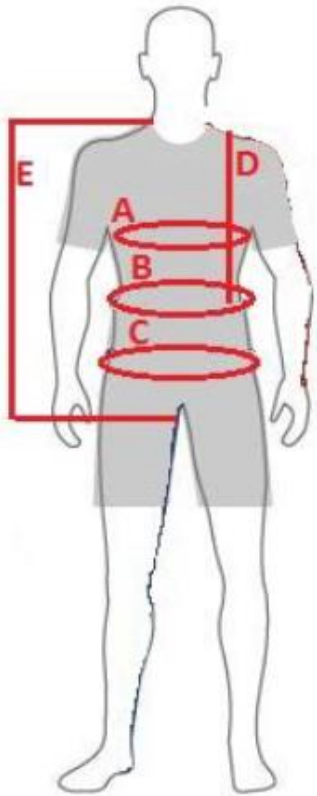


Waist and shoulders adjustments

Harness	C (cm)	E (cm)
S/M	75 to 94cm	66 to 77cm
L/XL	92 to 108cm	76 to 87cm

Examples : Greg : 1m73, 64kg, B: 88cm, A : 100cm with wetsuit => Harness S/M
Remi : 1m88, 90kg, B: 103cm, A : 110cm with wetsuit => Harness L/XL

Impact Vest



Impact Vest	A (cm)	B (cm)	D (cm)
S	81 to 89cm	68 to 74cm	48cm
M	90 to 100cm	75 to 88cm	52cm
L	101 to 110cm	89 to 96cm	55cm
XL	110 to 119cm	97 to 103cm	57cm
XXL	118 to 126cm	103 to 110cm	59cm

Examples : Greg : 1m73, 64kg, B: 88cm, A : 100cm with wetsuit => Size M
Remi : 1m88, 90kg, B: 103cm, A : 110cm with wetsuit => Size L
Or Size XL with a bigger warmer wetsuit or drysuit